

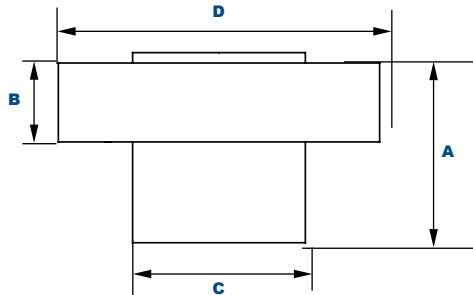
# P18130

## Twist Lock Receptacle



### Dimensions

<b>Diameter 1 (D)</b>	2.6" (66mm)
<b>Diameter 2 (C)</b>	1.4" (36mm)
<b>Height 1 (A)</b>	1.4" (36mm)
<b>Height 2 (B)</b>	0.6" (15mm)



### Features:

- 12" (180mm) Leads, AWG# 14, AWM1015
- UL773/ANSI C136.10-1996 Receptacle
- Phenolic Socket
- Includes ABS Housing
- 480V Max., 15 Amp Max

### Electrical Specifications:

- Input Voltage: 480VAC
- Ambient Temperature: -40°F ~ +176°F
- Relative Humidity: 99%
- Listing: UL Recognized Component Mark