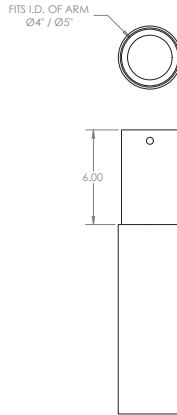




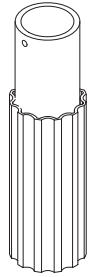
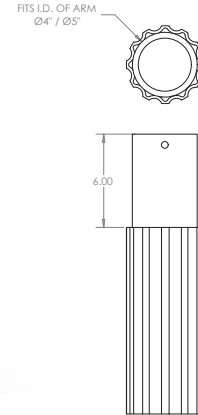
POLE OPTIONS

SLEEVE PROVIDES SMOOTH TRANSITION APPEARANCE FROM POLE TO ARM

SLEEVE PROVIDES SMOOTH TRANSITION APPEARANCE FROM POLE TO ARM



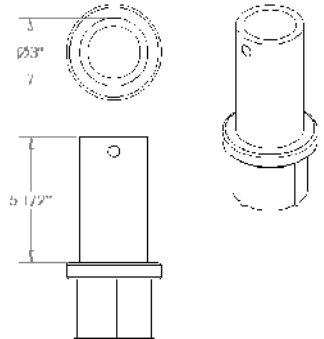
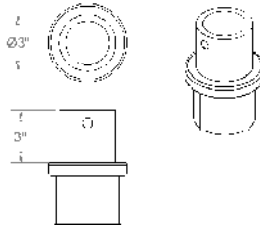
Sleeve (SLV) smooth



Sleeve (SLV) fluted

3" TENON FOR MOST OF POST TOP AND SMALLER ARM APPLICATIONS

5 1/2" TENON FOR MOST OF LARGER ARM APPLICATIONS



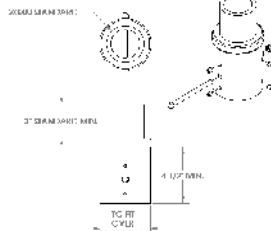
3" Tenon (T300)

5 1/2" Tenon (T355)

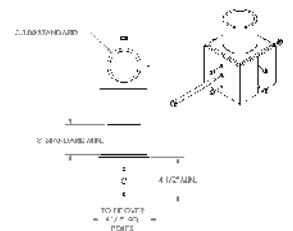
Tenon Adaptor (ordered separately)

Note: The following information is needed when ordering Tenon Adaptors:

- What size is the fixture ID?
- What is the OD of the pole?
- If there is an existing tenon in place to adapt to, provide length, width & height needed.



Round Tenon Adaptor (TAR)

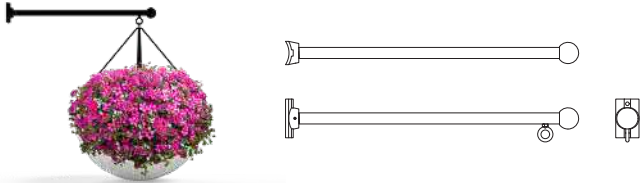


Square Tenon Adaptor (TAS)

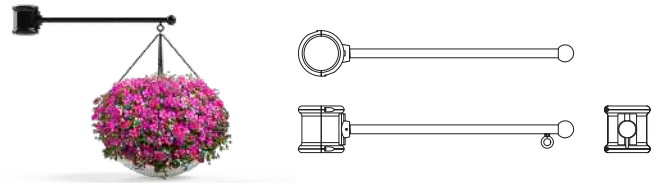


POLE OPTIONS

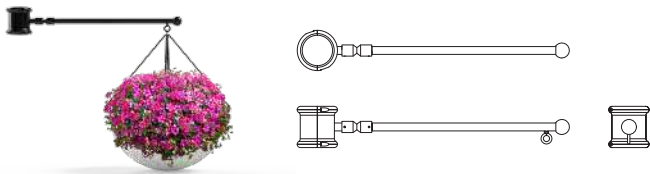
Plant Hanger (ordered separately)



Bolt On Plant Hanger (FH-BO)
 Ordered Separately
 Basket & Flowers not included



Clamp On Plant Hanger (FH-CO)
 Ordered Separately
 Basket & Flowers not included



Break-Away Plant Hanger (FH-BBA)
 Ordered Separately
 Basket & Flowers not included

GFI Covers



The GFI is supplied for mounting to an outlet opening, in the pole shaft, with a gasket and stainless steel screws (provided by others). Available in plastic (GFIP) or cast (GFIC).

Dual USB Port (USB)

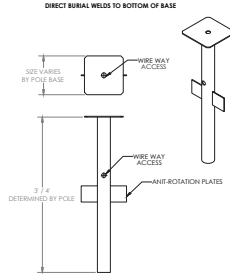


*Photo is a representation. The exact USB may differ.

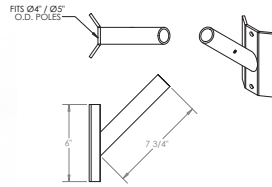


POLE OPTIONS

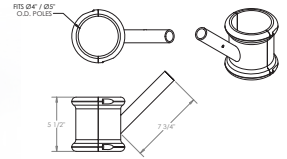
Direct Burial Shaft (DBS)



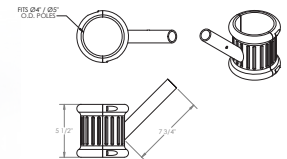
Flagholder (ordered separately)



Bolt On Flag Holder (FPH)
Ordered Separately



Clamp On Flag Holder-Smooth (FPH)
Ordered Separately



Clamp On Flag Holder-Fluted (FPH)
Ordered Separately

Eyebolts (ordered separately)



Clamp On Eye Bolt-Smooth (EB-CO)
Ordered Separately



Clamp On Eye Bolt-Fluted (EB-CO)
Ordered Separately

Also available in Bolt On



POLE OPTIONS

Finial Choice



PF1



PF2



PF3



PF4

Pole Cap



CAP
 (standard when ordering CAP)



PF11
 Custom



PF9
 Custom



PF6
 Custom



PF7
 Custom



PF8
 Custom