



# A L U M I N U M P O L E S

### Specifications and Features:

- 8' to 16' mounting heights
- For single or multiple luminaire mounting
- Luminaires may be mounted on tenons, brackets or shaft may be drilled to manufacturer's mounting specifications

### Shaft

#### Direct Embedment

Unless otherwise specified, the length of the embedded section of a 4" diameter is 3', and a 5" shaft is 4'. A 1 1/2" diameter grommetted wire inlet hole located 1' 6" below grade is included.

#### Ground Lug

The ground lug is a tab that is welded to the inside of the shaft, has a tapped 3/8" -16 hole to accommodate the ground connector, and is located opposite the hand hole or wire inlet hole.

#### Tenons

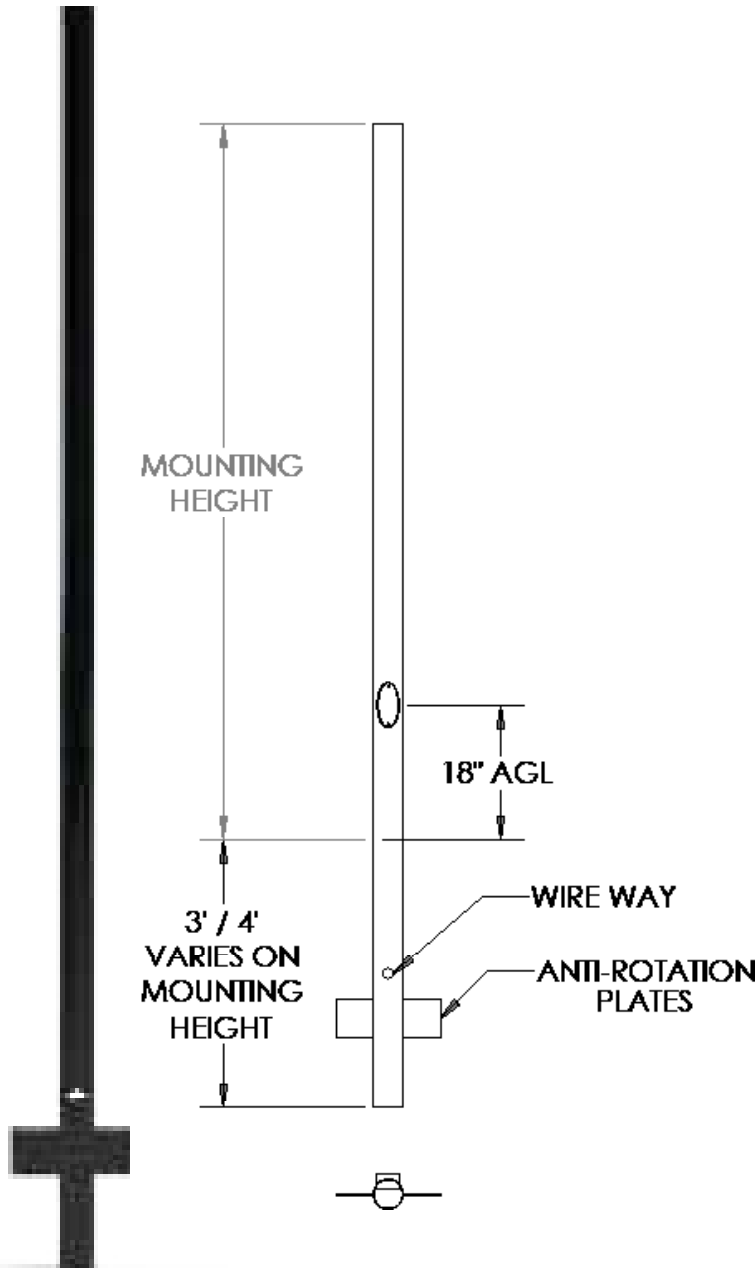
- T300=Standard for post top (2 7/8" OD x 3" tall)
- T355=Standard for shepherd's crooks (2 7/8" OD x 5.5" tall)
- CAP=No tenon, removable cap

#### Finish - Super Durable Polyester TGIC Powder Coat

- Standard finishes: high gloss black, textured black, high gloss white, medium bronze, dark bronze, green, gray, silver metallic
- Premium finishes (adder): Verde patina, pewter patina, silver sparkle, semi-gloss or matte black, satin brushed
- Custom and Marine-grade finishes are available. All RAL colors are available to match (adder).

#### Accessories

- GFIC=Weatherproof GFI in-use cover, cast aluminum (must indicate location)
- GFIP=Weatherproof GFI in-use cover, plastic (must indicate location)
- USB=Dual USB port (must indicate location)
- HH=Handhole
- ARD=Anti-Rotation Device





# A L U M I N U M P O L E S

**Order Information Example: 4-10-M-S-125-T300-N-SB**

Diameter	Height	M	S	Wall Size	Tenon	Accessories (Adder)	Finish
3=3" Straight 4=4" Straight 5=5" Straight	08=8' 10=10' 12=12' 14=14' 16=16'	M=Direct Burial	S=Smooth	Refer to Chart	T300=2 7/8" OD x 3" Tall T355=2 7/8" OD x 5.5" Tall CAP=Removable cap, no tenon N=None	N=None GFIC=GFI in-use cover, cast aluminum* GFIP=GFI in-use cover, plastic* USB=Dual USB port* HH=Handhole ARD=Anti-Rotation Device  *Please indicate location	BK=Black BZ=Bronze DBZ=Dark Bronze WH=White GR=Green SM=Silver Metallic GY=Light Gray TBK=Textured Black  <i>Premium Colors (adder)</i> SB=Satin Brushed VP=Verde Patina SS=Silver Sparkle PP=Pewter Patina CC=Custom Color (Consult Factory)

POLES		TYPICAL WEIGHT AND ALLOWABLE SIZE OF LUMINAIRES*					DIMENSIONS OF STANDARDS					
MODEL NUMBER	MOUNT HEIGHT	LUMINAIRE WEIGHT-LBS	EFFECTIVE PROJECTED AREA-SQ FT-AT:					EXPOSED HEIGHT	SHAFT LENGTH	TOP	BUTT	WALL
			70 MPH	80 MPH	90 MPH	100 MPH	110 MPH					
308-M/125	8'	75	16.4	11.7	8.4	6.4	4.4	8'	10'	3"	3"	.125
408-M/125	8'	75	20.1	15.4	12.1	9.8	8.1	8'	11'	4"	4"	.125
310-M/125	10'	75	12.7	9.2	7.1	5.9	3.8	10'	12'	3"	3"	.125
410-M/125	10'	75	15.3	11.6	9.1	7.3	6.0	10'	13'	4"	4"	.125
510-M/125	10'	75	18.3	14.2	12.7	10.2	8.2	10'	14'	5"	5"	.125
312-M/125	12'	75	9.7	7.8	6.4	4.3	3.1	12'	14'	3"	3"	.125
412-M/125	12'	75	12.0	9.0	7.0	5.5	4.5	12'	15'	4"	4"	.125
512-M/125	12'	75	16.4	13.7	11.2	9.1	7.6	12'	16'	5"	5"	.125
414-M/125	14'	75	9.5	7.0	5.4	4.2	3.4	14'	17'	4"	4"	.125
514-M/125	14'	75	13.4	11.2	9.6	8.1	6.4	14'	18'	5"	5"	.125
516-M/125	16'	75	10.1	8.2	7.1	5.9	4.4	16'	20'	5"	5"	.125
516-M/156	16'	75	12.2	11.1	9.5	7.9	5.2	16'	20'	5"	5"	.156