

Pemco Lighting Products uses a 5 stage finish process to ensure superior paint adhesion and durability in the field. These steps include:

- Stage I:** Heat treat aluminum parts to a 356-T6 and 6061 T6 yield strength.
- Stage II:** All aluminum parts are degreased using a grease cutting agent before going through an industrial detergent and rinse.
- Stage III:** A four step iron phosphate coating is used to prepare metal for the powder process:
1. Iron phosphate bath
  2. Clear cold rinse (room temperature)
  3. Clear hot rinse (140° to 180°)
  4. High pressure air drying
- Stage IV:** Powder coat operation (3 mil minimum) application, depending on part configuration, size & weight.
- Stage V:** Product is cured in a 365° to 400° oven.

## Standard Finishes

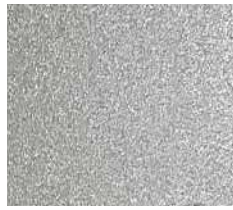
---



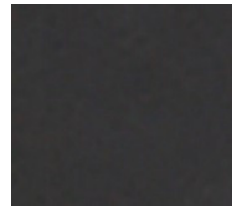
White



Gray



Silver Metallic



Medium Bronze



Dark Bronze



Green



Black



Textured Black



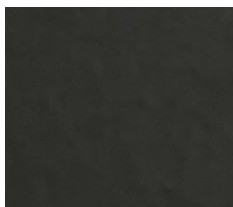
Verde Patina



Pewter Patina



QBZ



QTBK

### Notes

- Standard finishes are no extra charge
- Premium & Custom finishes incur an additional charge
- All colors shown are approximate and may have a slight variation. For accuracy, contact the factory for a paint chip sample.